

Drop-In

Drop-in bain-marie, air ventilated, with one well (5 GN container capacity)

ITEM # _____

MODEL # _____

NAME # _____

SIS # _____

AIA # _____



341012 (D03H5)

* NOT TRANSLATED *

Main Features

- Electronic overheating protection.
- Designed to serve the food in gastronorm containers.
- Precise temperature control and setting at 0,1°C .
- As standard the product comes with digitally controlled thermostat which is in line of HACCP norms and provides visual alarm as a warning of the increasing or decreasing temperatures.
- It is possible to transform one of the GNs to soup dispenser with the available accessory.
- Wells in 304 AISI stainless steel with drain holes and pipes and with rounded corners to facilitate cleaning operations.
- Suitable for GN 1/1 containers with a maximum height of 150 mm.
- A constant flow of hot air circulating through the containers guarantees the correct food temperatures. Temperature uniformity and fast warm up time are guaranteed thanks to heavy duty armored heating elements and powerful radial booster fans. Cylindrical
- Since the water is not needed to heat the well, the system guarantees easy of use and maintenance: there is no calcification of the resistances.
- No need extra connections for water, less work during installation/maintenance.
- CB and CE certified by a third party notified body.
- Designed to be positioned in flush installation providing improved cleanliness and suitable for modern design installations.
- Available drop-in dimensions: 1, 2, 3, 4, 5, 6 GN.
- Food introduced at the correct temperature maintains its core temperature according to Afnor Standards.

Construction

- IPx4 water protection.
- Electronic control with temperature display.
- Well in 304 AISI stainless steel with rounded corners to facilitate cleaning operations. The well is also equipped with a drain hole.

Sustainability



- 19mm thick rock wool isolated with galvanize sheet guarantees excellent well insulation to reduce energy dispersion.
- 90% fast preheating phase and no need for water (as traditional bain marie), reduces energy and no water consumption.
- The system operates without water and ensures energy efficiency when compared to standard bain-marie heating.
- No water consumption means less operating costs.

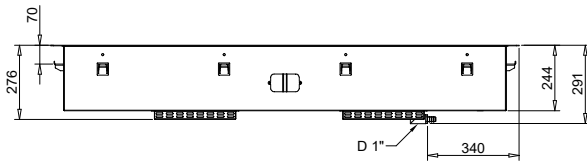
APPROVAL: _____



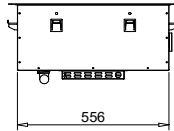
Electrolux
PROFESSIONAL

Drop-In
Drop-in bain-marie, air ventilated, with
one well (5 GN container capacity)

Rear side

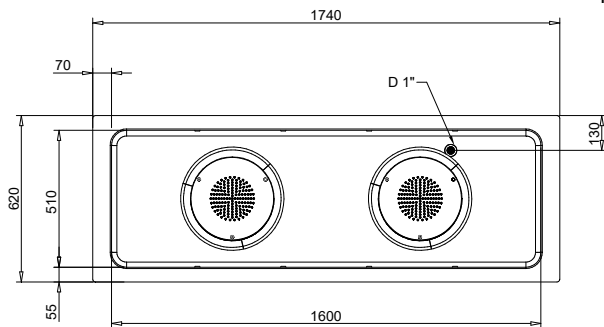


Side



D = Drain
EI = Electrical inlet (power)

Top



Drop-In
Drop-in bain-marie, air ventilated, with one well (5 GN container
capacity)
The company reserves the right to make modifications to the products
without prior notice. All information correct at time of printing.

2025.10.13



Electrolux
PROFESSIONAL

Drop-In
Drop-in bain-marie, air ventilated, with
one well (5 GN container capacity)

Electric

Supply voltage:	220-240 V/1N ph/50/60 Hz
Electrical power max.:	2.09 kW

Key Information:

External dimensions, Width:	1740 mm
External dimensions, Depth:	620 mm
External dimensions, Height:	276 mm
Net weight:	42.6 kg
Shipping weight:	70 kg
Shipping height:	500 mm
Shipping width:	700 mm
Shipping depth:	1800 mm
Shipping volume:	0.63 m ³
Set temperature:	+75 / +85 °C

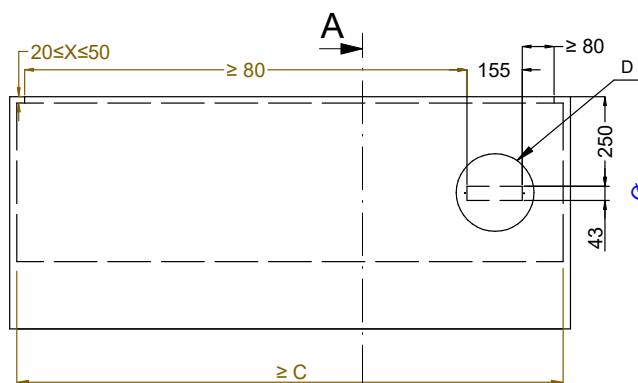
Sustainability

Noise level:	60 dBA
--------------	--------

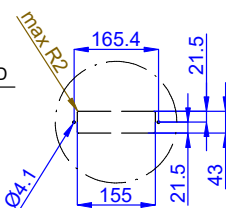


Drop-In
Drop-in bain-marie, air ventilated, with one well (5 GN container
capacity)
The company reserves the right to make modifications to the products
without prior notice. All information correct at time of printing.

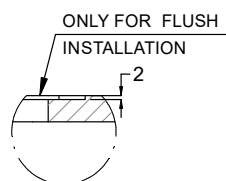
2025.10.13



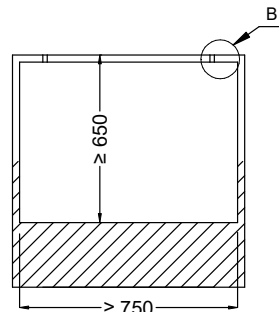
Front view
Scala: 1:10



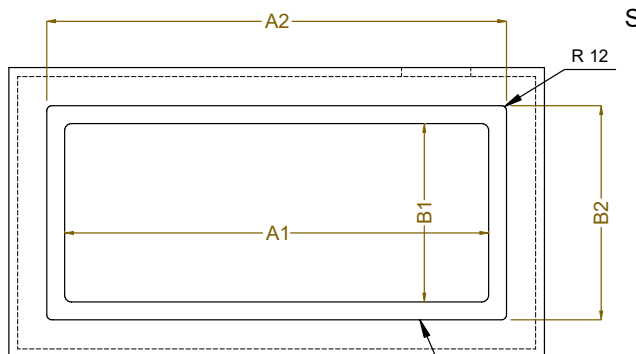
Dettaglio D
Scala 1:7



Dettaglio B
Scala 1:2

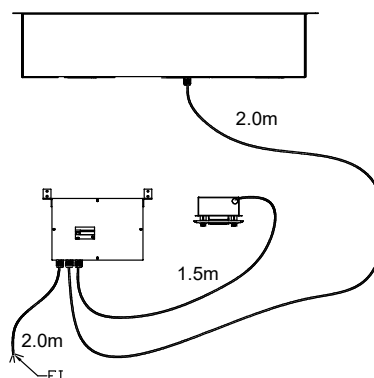
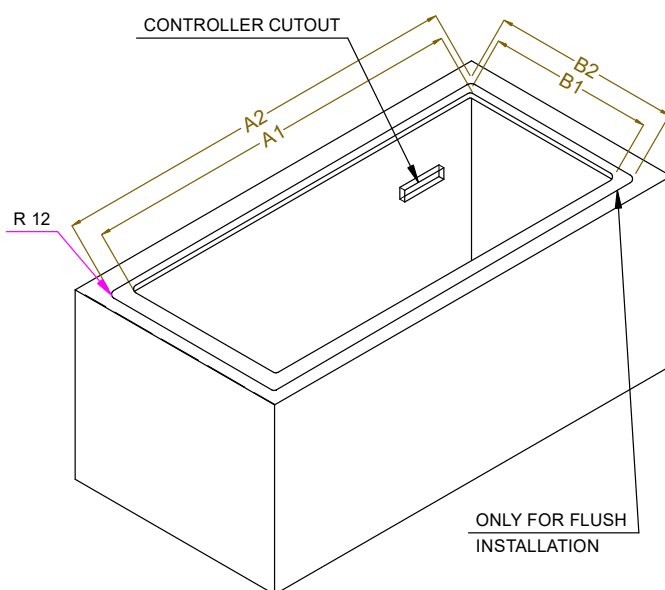


Section Cut A-A
Scala: 1:10



Top view
Scala: 1:10

CAPACITY	CUTOUT		LOWERING FOR FLUSH INSTALLATION		C
	A1	B1	A2	B2	
1GN	380	580	454	624	560
2GN	700		774		880
3GN	1030		1104		1200
4GN	1350		1424		1530
5GN	1670		1744		1850
6GN	2000		2074		2180



595T01L00 - AIR BAIN MARIE